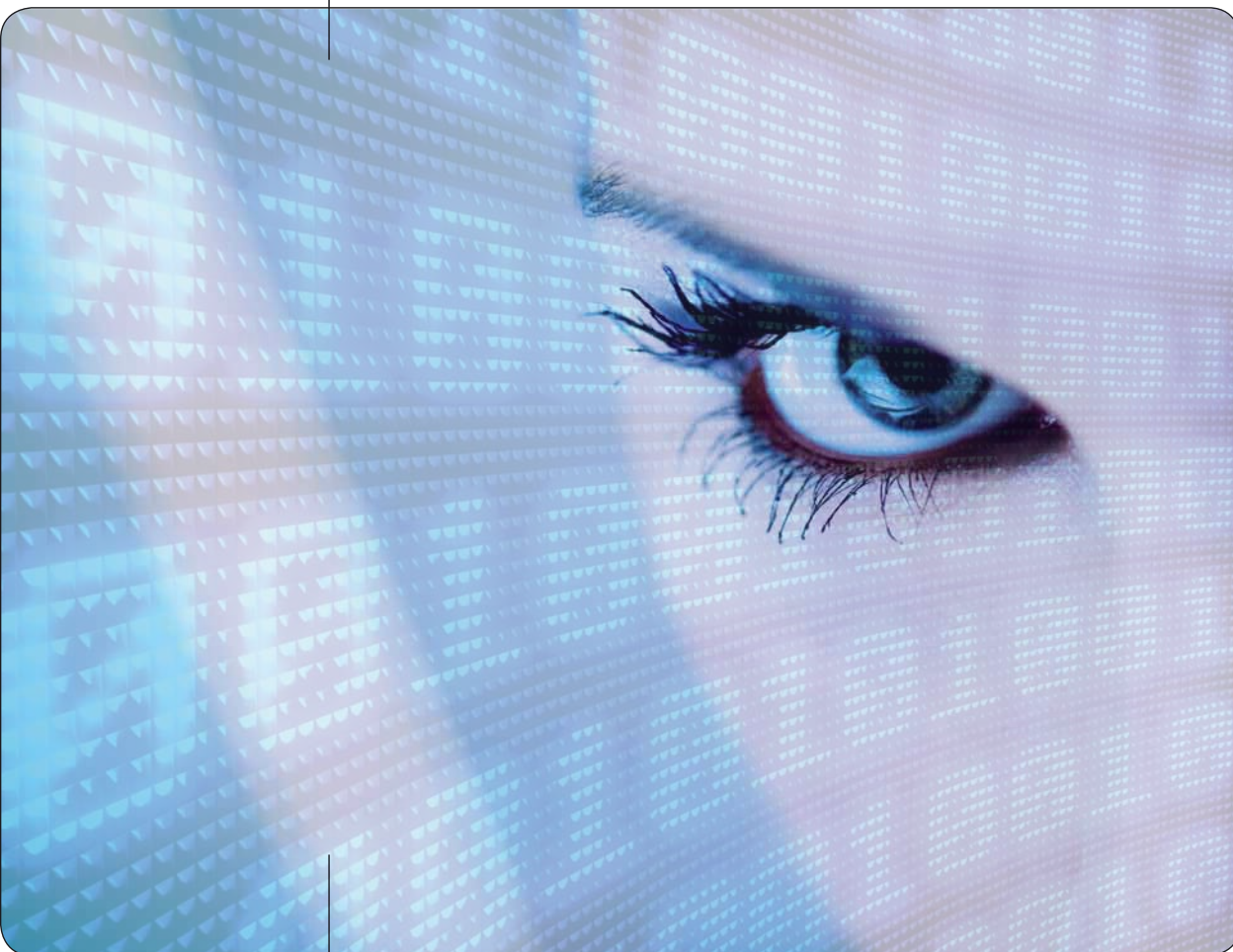


**ALFALAS®**

**LASER SOFTWARE**



LASER SYSTEMS

## **TP\_alfa® + Modules + Add-On's**

**GRAPHIC USER INTERFACE, TEXT FUNCTIONS,  
IMPORT FUNCTIONS, DATABASE FUNCTIONS, SPECIAL OPTIONS**

*technologies for your future*  
*made in germany*

ORIGINAL

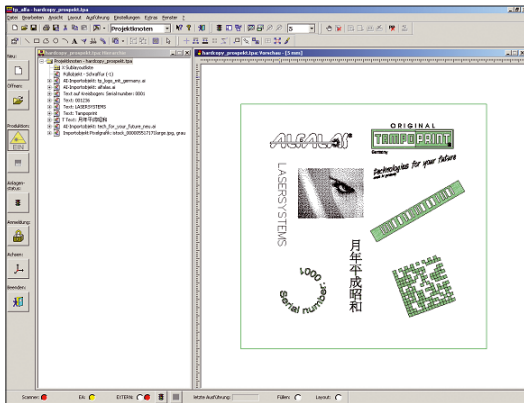
**TAMPOPRINT®**

Tampon printing machines  
ALFALAS® Laser Systems  
Automations

# TP\_alfa® Laser Software

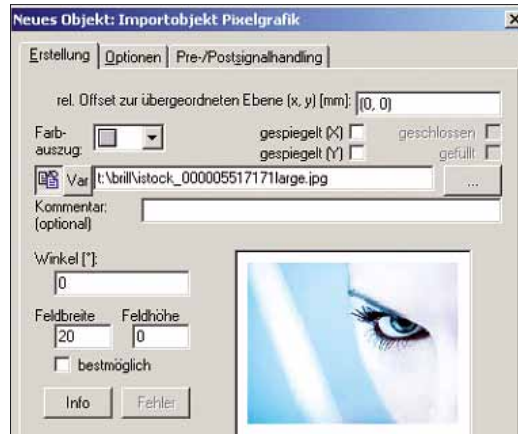
Software TP\_alfa®, Windows® 7 compatible Multilanguage, Unicode capable, password protection with various authorisation levels

## Functions of graphic user interface



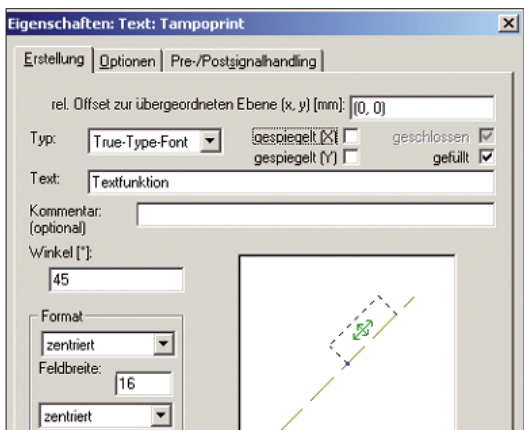
- ✓ toolbars
- ✓ context menu
- ✓ bar code module / Data Matrix based on ICC 200 standard
- ✓ TrueType fonts
- ✓ single line fonts
- ✓ freely defined filling routines
- ✓ variable number formats
- ✓ control via TCP/IP

## Import functions



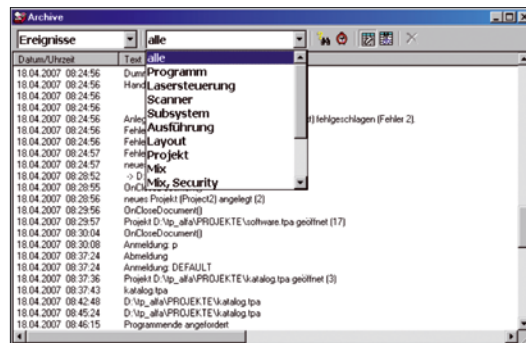
- ✓ Import filter for vector based file formats (\*.ai, \*.plt, \*.dxf)
- ✓ Import filter for pixel based file formats (\*.jpg, \*.bmp, \*.tif)

## Text functions



- ✓ Predefined text (not variable)
- ✓ Variable text

## Database functions



- Logging of:
- ✓ the boot (is not the same as number of pieces)
  - ✓ user administration
  - ✓ downtimes
  - ✓ error messages



WSE Workstation



WSED Workstation



WSM Workstation Multi

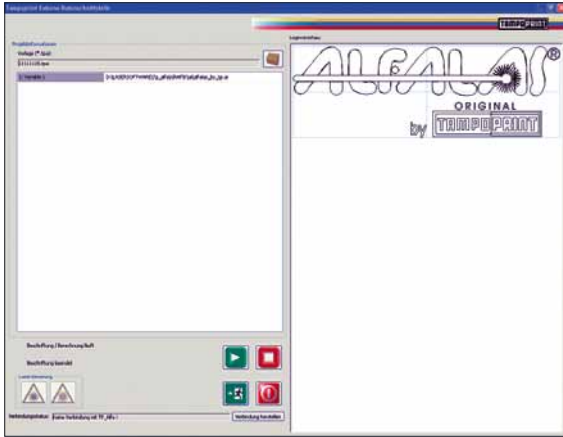


WS Workstation



WST Workstation

## ■ User interface "CT-60"



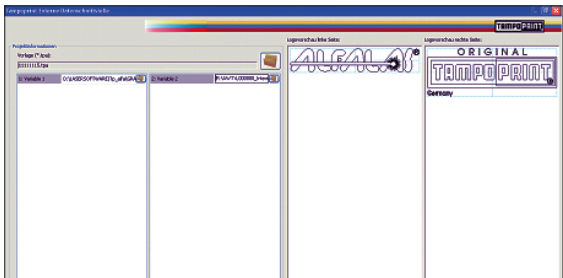
- ✓ Standard Add-On with our "CT-60" benchtop cliché laser
- ✓ Special interface function for the tampon printing cliché production (laser engraving of line graphics). The following interface functions will facilitate your manufacturing process: Selection of cliché formats (you will store your cliché formats), independent graphics selection, free print image position.

## ■ Software module for MOF series



- ✓ "TP\_mix" software for promotions
- ✓ all current promotion types (symbols, PIN code variants) can be generated
- ✓ special safety functions for tamper-proof production

## ■ User interface "Hybrid 90-2"



- ✓ Standard Add-On with tampon printing machine "Hybrid 90-2"
- ✓ Special interface for the laser engraving of "microflex" cliché bands (integrated cliché production). The following interface functions will facilitate your manufacturing process: independent graphics selection, free allocation of the print image graphics to printing unit 1 or 2, well-arranged presentation of the two-colour print motifs.

## ■ Other Add-On's

- "TP\_waz" Add-On for marking water flow meters including data transfer from external database
- "TP\_label" Add-On for batch processing of pressure-sensitive labels with a surface suitable for laser marking
- "TP\_anke" Add-On for the automatic distance measurement with delivery of the measured values to "TP\_alfa®" Advantage: Print image variables will be fully automatically adjusted between workpiece surface and laser write head for the optimum focus setting (distance setting).



CT-60 Cliché benchtop laser



MOF-CIRCUM – LongCaps



MOF-CORK – Synthetic corks



MOF-PROMO – Plastic closures



MOF-PROMO – Crown corks

## ■ ALFALAS® Laser software

	TP_alfa®	TP_mix	TP_waz	TP_anke	Special user interface
SK60	✓	X	X	X	0
SK62	✓	X	0	0	0
SK65	✓	X	0	0	0
SK86	✓	X	0	0	0
SK88	✓	X	0	0	0
SK90	✓	0	0	0	0
SK96	✓	0	0	0	0
SK98	✓	0	0	0	0
SK315	✓	0	0	0	0
SK622	✓	X	0	0	0
CT-60	✓	X	X	X	✓
WST	✓	X	0	0	0
WSE	✓	X	0	0	0
WSED	✓	X	0	0	0
WSM	✓	X	0	0	0
MOF-PROMO	✓	✓	X	X	X
MOF-CORK	✓	✓	X	X	X
MOF-CIRCUM	✓	✓	X	X	X

✓ = Scope of supplies    0 = optionally available    X = not available

Trademarks of TAMPOPRINT® AG:



Dealer:



The reproduction of trademarks and brands used in this brochure, even if not explicitly expressed, does not justify the assumption that such names or symbols may be considered as free as defined by the Trademark Act and may therefore freely be used. The rights are the property of the respective owner.

TAMPOPRINT® products are permanently updated to keep pace with the latest technological developments. For this reason, figures and descriptions are non-binding. Our machines are manufactured based on the currently valid European Machinery Directives as well as the European product standards EN 1010 - 1 and EN 1010 - 2.

**Subject to alterations! ©Copyright**

## ■ Individual laser training course

The training is designed for users who intend to use an ALFALAS® laser system from TAMPOPRINT® AG or are already in possession of these systems. The contents will be tailored to your needs (also see the flyer "Our training courses").

We will be happy to work out an offer for you.

E-Mail: [seminar@tampoprint.de](mailto:seminar@tampoprint.de)



### TAMPOPRINT® AG

Lingwiesenstraße 1  
70825 Korntal-Münchingen, GERMANY  
☎ +49 7150 928-0  
Fax: +49 7150 928-400  
E-Mail: [info@tampoprint.de](mailto:info@tampoprint.de)

### "Ventes et Affaires Françaises"

☎ +49 7150 928-144  
Fax: +49 7150 928-432  
E-Mail: [ventes@tampoprint.de](mailto:ventes@tampoprint.de)  
http: [www.tampoprint.de](http://www.tampoprint.de)

### TAMPOPRINT® INTERNATIONAL CORP.

1400 26th Street, Vero Beach, FL 32960, USA  
☎ +1 772 778-8896, 800 810-8896  
Fax: +1 772 778-8289  
E-Mail: [sales@tampoprint.com](mailto:sales@tampoprint.com)  
http: [www.tampoprint.com](http://www.tampoprint.com)

### TAMPOPRINT® IBERIA S.A.U.

c/Caspe 127-135 local B, 08013 Barcelona, SPAIN  
☎ +34 93 2327161  
Fax: +34 93 2471500  
E-Mail: [tampoprint@tampoprint.es](mailto:tampoprint@tampoprint.es)  
http: [www.tampoprint.es](http://www.tampoprint.es)