

TECHNOLOGY

TSQ -SERIES

TSQ transverse doctor blade		TSQ 60 transverse doctor blade 350/510/710	TSQ 90 transverse doctor blade 440/600/800	TSQ 130-1 transverse doctor blade 730/930	TSQ 130-M transverse doctor blade 730/930
Parts no.		01 03 40	01 03 41	01 03 45 **	01 03 44 **
Ink residue pick-up system		integrated	integrated	integrated	integrated
Single cycle		yes	yes	yes	yes
Multiple printing		yes	yes	yes	yes
Continuous run		yes	yes	yes	yes
Piece counter		yes	yes	yes	yes
Variable speed control		yes	yes	yes	yes
Cycles/hour	max.	200 - 1.000	200 - 700	600 - 1.100	600 - 1.080
Ink cup/doctoring cup	ø mm	60	90	130 (optional: 140)	130 (optional: 140)
Variable doctoring contact pressure		yes	yes	yes	yes
Cliché size	mm	70 x 350 / 510 / 710	100 x 440 / 600 / 800	150 x 730 / 930	150 x 730 / 930
Print image size max.	ø mm	50 x 180 / 340 / 540	80 x 180 / 340 / 540	120 (130) x 320 / 520	120 x 320 / 520 (650)
Variable tampon stroke onto workpiece	mm	20 - 100	20 - 100	60 - 120	60 - 120
Variable tampon stroke onto cliché	mm	20 - 100	20 - 100	50 - 95	50 - 95
Tampon installation height max.	mm	116	116	200	200
Force of pressure	N	2.500	2.500	6.000	6.000
Drive		electropneumatic	electropneumatic	servo motors	electropneumatic-mechan.
Connected load	kW	0,5	0,5	3,5	3,5
Power supply	V/phase	230V/1/N/PE	230V/1/N/PE	400V/3/N/PE	400V/3/N/PE
Interface		D-SUB 37-pole	D-SUB 37-pole	D-SUB 37-pole	D-SUB 37-pole
Power frequency	Hz	50-60	50-60	50-60	50-60
Control		PLC	PLC	PLC	PLC
Control voltage	V/DC	24	24	24	24
Prefuse	A	16	16	16	16
Pneumatic supply fine filter 5 µm	bar	6	6	6	6
Air consumption / cycle	NL	18	18	6	6
Width	mm	960	1.000	1.255	1.255
Depth	mm	1.110	1.110	1.564	1.564
Height	mm	*653 / 1.550	*653 / 1.550	1.855	1.855
Weight	approx. kg	242	268	960	1.050

* = Table model, **= not available as table model!

Scope of supplies

- Tool kit
- 1 Paper cup / 10 pcs.
- 1 Brush
- 1 Spray bottle 500 ml
- 1 Assembly table
- 1 Gripping tongs
- 1 Ink/doctoring cup
- 1 Thrust collar
- 1 Tampon coupling
- Foot switch
- Documentation

Accessories & Options

- "ClipLock®" ink/doctoring cup Ø 130 or 140 mm
- Conversion kit from Ø 130 mm to Ø 140 mm
- Thrust collar 2-colour
- Indexing slide manual / automatic
- Flat exposure unit "TSQ" 380 x 1100 mm
- Tampon coupling with jig and printing mask, x-y adjustment (TSQ 130)
- Recommendation: use of tampon material H
- Servo drive doctoring
- Increased printing pressure (TSQ 60/90)



TAMPOPRINT® AG
 Lingwiesenstraße 1
 70825 Korntal-Münchingen, GERMANY
 ☎ +49 7150 928-0
 Fax: +49 7150 928-400
 E-Mail: info@tampoprint.de
"Ventes et Affaires Françaises"
 ☎ +49 7150 928-144
 Fax: +49 7150 928-432
 E-Mail: ventes@tampoprint.de
 http: www.tampoprint.de

TAMPOPRINT® INTERNATIONAL CORP.
 1400 26th Street, Vero Beach, FL 32960, USA
 ☎ +1 772 778-8896, 800 810-8896
 Fax: +1 772 778-8289
 E-Mail: sales@tampoprint.com
 http: www.tampoprint.com

TAMPOPRINT® IBERIA S.A.U.
 c/Caspe 127-135 local B, 08013 Barcelona, SPAIN
 ☎ +34 93 2327161
 Fax: +34 93 2471500
 E-Mail: tampoprint@tampoprint.es
 http: www.tampoprint.es



The reproduction of trademarks and brands used in this brochure, even if not explicitly expressed, does not justify the assumption that such names or symbols may be considered as free as defined by the Trademark Act and may therefore freely be used. The rights are the property of the respective owner.

TAMPOPRINT® products are permanently updated to keep pace with the latest technological developments. For this reason, figures and descriptions are non-binding. Our machines are manufactured based on the currently valid European Machinery Directives as well as the European product standards EN 1010 - 1 and EN 1010 - 2.

Subject to alterations! ©Copyright

TSQ

TAMPON PRINTING MACHINES



■ TAMPON PRINTING MACHINES
■ ACCESSORIES
■ SERVICE

The "TSQ" series with transverse ink/doctoring cup movement

Perfect for long, narrow work pieces

Several cliché lengths available

*Technologies for your future
made in germany*

CP/Waepoetik 2/2011

ORIGINAL



Tampon printing machines
 ALFALAS® Laser Systems
 Automations

STANDARD

TSQ -SERIES

LATERAL THINKERS ALSO COME IN MANY COLOURS

MADE IN GERMANY

Several lengths in one

The "TSQ" machine series was specifically developed for printing oblong workpieces.

The doctoring cup is not positioned directly over the print image, but instead it doctors transversely to the tampon direction.

A cliché cover protects the long cliché plates against drying and soiling during longer breaks. An integrated ink residue pick-up system is a standard option.

The "TSQ 60" and "TSQ 90" are pneumatically driven machines.

Because of its larger printing surface, the "TSQ 130-1" has an electromechanical drive to create energy-efficiently high printing pressure.

The option of setting the doctor stroke to different cliché widths (= printing motif) is also a standard option.



"TSQ 130-1 - 730/930"



"TSQ 90 - 440/600/800"



"TSQ 60 - 350/510/710"



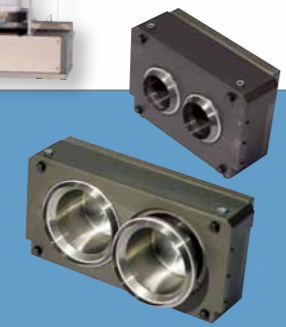
Reference: Electrical connector strip



Ink residue pick-up system + cliché cover

"ClipLock®" ink/doctoring cup with lid

Ink/doctoring cup with change-over station



2 ink/doctoring cups positioned side by side by using a 2-colour thrust collar

