

TECHNOLOGY

V-DUO -SERIES

| V-DUO | V-60/60 Duo | V-90/90 Duo | V-130/130 Duo |
|---------------------------------------|---------------------------|------------------------|-------------------------|
| Parts no. Table model | 01 03 51* / 01 00 51 | 01 03 52* / 01 00 52 | 01 03 54* / 01 00 54 |
| Ink residue pick-up system | integrated | integrated | integrated |
| Single cycle | yes | yes | yes |
| Multiple printing | yes | yes | yes |
| Continuous run | yes | yes | yes |
| Piece counter | yes | yes | yes |
| Variable speed control | yes | yes | yes |
| Cycles/hour | max. 1.300 | 1.200 | 800 |
| Ink cup/doctoring cup | ø mm 60 | 90 | 130 |
| Variable doctoring contact pressure | yes | yes | yes |
| Cliché size | mm 70 x 140 | 100 x 215 | 150 x 300 |
| Print image size max. | ø mm 55 | 85 | 125 |
| Variable tampon stroke onto workpiece | mm 10-160 optional: 0-200 | 10-160 optional: 0-200 | 10-160 optional: 10-200 |
| Variable tampon stroke onto cliché | mm 10 - 130 | 10 - 130 | 10 - 100 |
| Tampon installation height max. | mm 95 | 95 | 152 |
| Force of pressure | N 1.170 | 1.170 | 2.500 |
| Drive | electropneumatic | electropneumatic | electropneumatic |
| Connected load | kW 0,5 | 0,5 | 0,5 |
| Power supply | V/phase 230V/1/N/PE | 230V/1/N/PE | 230V/1/N/PE |
| Interface | D-SUB 37-pole | D-SUB 37-pole | D-SUB 37-pole |
| Power frequency | Hz 50-60 | 50-60 | 50-60 |
| Control | PLC | PLC | PLC |
| Control voltage | V/DC 24 | 24 | 24 |
| Prefuse | A 16 | 16 | 16 |
| Pneumatic supply fine filter 5 µm | bar 6 | 6 | 6 |
| Air consumption / cycle | NL 12 | 12 | 26 |
| Width | mm 733 | 733 | 850 |
| Depth | mm 820 | 820 | 1.190 |
| Height | mm *710 / 1.550 | *710 / 1.550 | *890 / 1.750 |
| Weight | approx. kg *160 / 280 | *160 / 280 | *400 / 550 |

* = Table model

Scope of supplies

- Toolkit
- 1 assembly table
- 1 pair gripping tongs
- 2 ink/doctoring cups
- 2 thrust collars
- 1 spray bottle, 500 ml
- 2 tampon couplings
- 1 ink residue pick-up system
- Foot switch
- Documentation
- 2 Tampons 410, 6 Shore-A, Silicone material 3

Accessories & Options

- Rotary index table T2, T4, 150 T2, 150 T4
- Vacuum distributor for rotary index table
- Manually operated indexing slide, stroke 240 mm
- Cross table "V 60/90 DUO" for integration in automations
- 2-colour ink/doctoring cup ø 90 mm
- Bench model
- Light curtain
- Special programme for sequence control (automations)
- Memory extension (jobs)
- Can be combined with "Modul 2010"



TAMPOPRINT® AG
 Lingwiesenstraße 1
 70825 Korntal-Münchingen, GERMANY
 ☎ +49 7150 928-0
 Fax: +49 7150 928-400
 E-Mail: info@tampoprint.de
"Ventes et Affaires Françaises"
 ☎ +49 7150 928-144
 Fax: +49 7150 928-432
 E-Mail: ventes@tampoprint.de
 http: www.tampoprint.de

TAMPOPRINT® INTERNATIONAL CORP.
 1400 26th Street, Vero Beach, FL 32960, USA
 ☎ +1 772 778-8896, 800 810-8896
 Fax: +1 772 778-8289
 E-Mail: sales@tampoprint.com
 http: www.tampoprint.com

TAMPOPRINT® IBERIA S.A.U.
 c/Caspe 127-135 local B, 08013 Barcelona, SPAIN
 ☎ +34 93 2327161
 Fax: +34 93 2471500
 E-Mail: tampoprint@tampoprint.es
 http: www.tampoprint.es

Dealer:

ORIGINAL



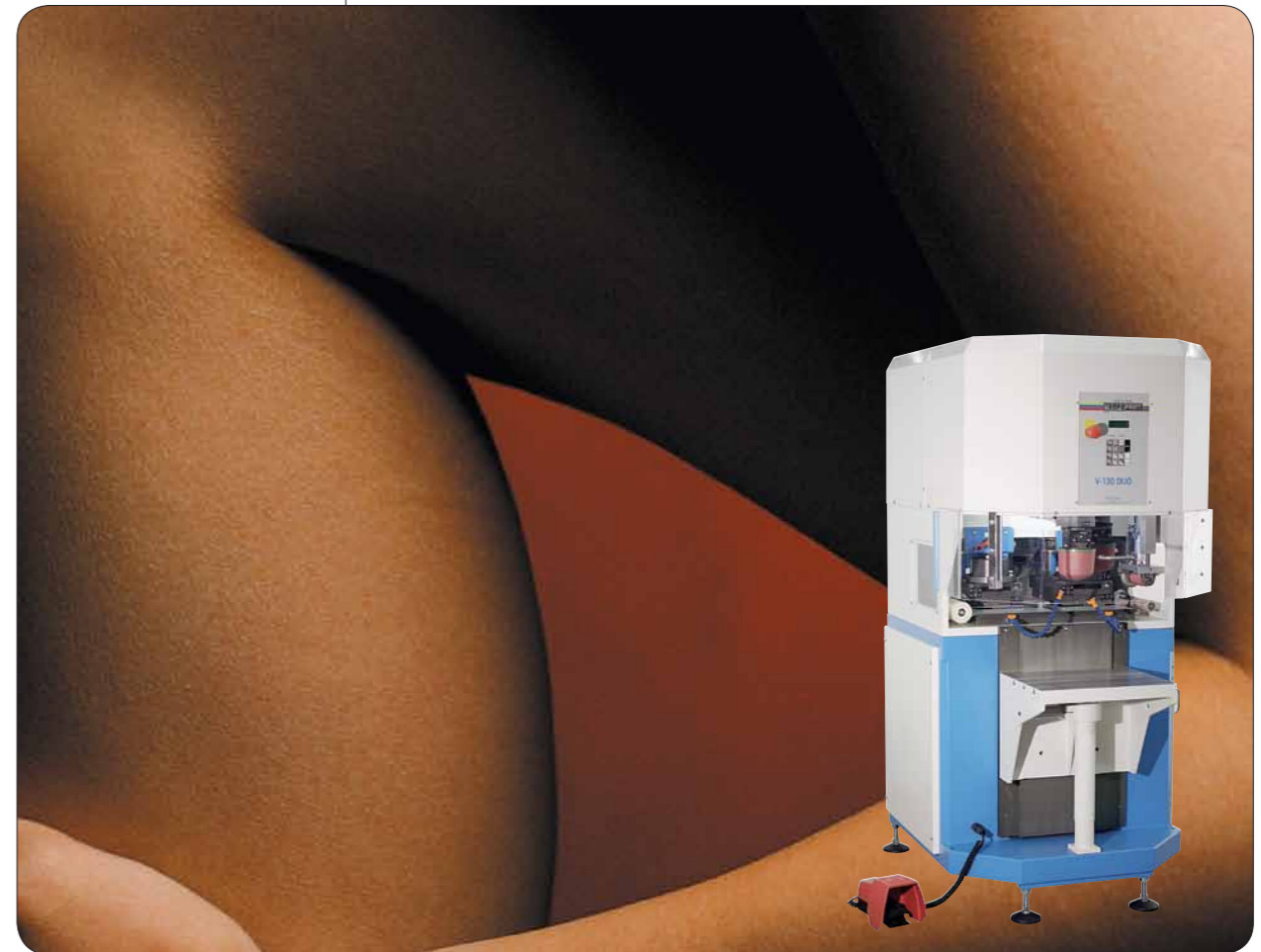
The reproduction of trademarks and brands used in this brochure, even if not explicitly expressed, does not justify the assumption that such names or symbols may be considered as free as defined by the Trademark Act and may therefore freely be used. The rights are the property of the respective owner.

TAMPOPRINT® products are permanently updated to keep pace with the latest technological developments. For this reason, figures and descriptions are non-binding. Our machines are manufactured based on the currently valid European Machinery Directives as well as the European product standards EN 1010 - 1 and EN 1010 - 2.

Subject to alterations! ©Copyright

V-DUO

TAMPON PRINTING MACHINES



TAMPON PRINTING MACHINES
 ACCESSORIES
 SERVICE

2-colour tampon printing machine

Very high registration accuracy due to one printing position for both tampons

At home everywhere: stand-alone, semi-automation, fully automatic machine

*technologies for your future
 made in germany*

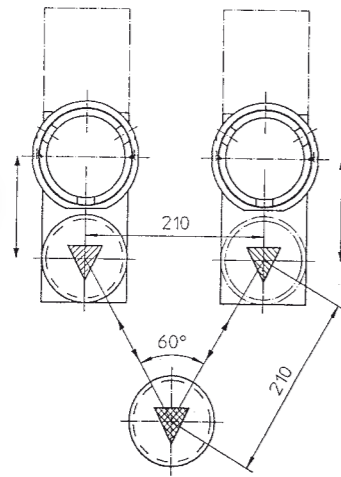
ORIGINAL



Tampon printing machines
 ALFALAS® Laser Systems
 Automations

STANDARD

V-DUO -SERIES



Very high performance.

The "V-DUO" series features 2-colour machines. Its unique functional principle facilitates very high performance.

The V-shaped tampon bridge facilitates parallel print image transfer and print image pick-up. A further benefit is the printing of both tampons at one printing position, resulting in a very high register accuracy.

The combination of V principle and universal control makes it possible to fulfil practically any wish. The variety of setting options can be saved in 5 programme sequences. Each tampon can be independently programmed with all functions. The function "start of production" allows actuating customer's automations. The two cliché holders are provided with an x-y-w adjustment option, an ink residue pick-up system is installed as standard.

Performance

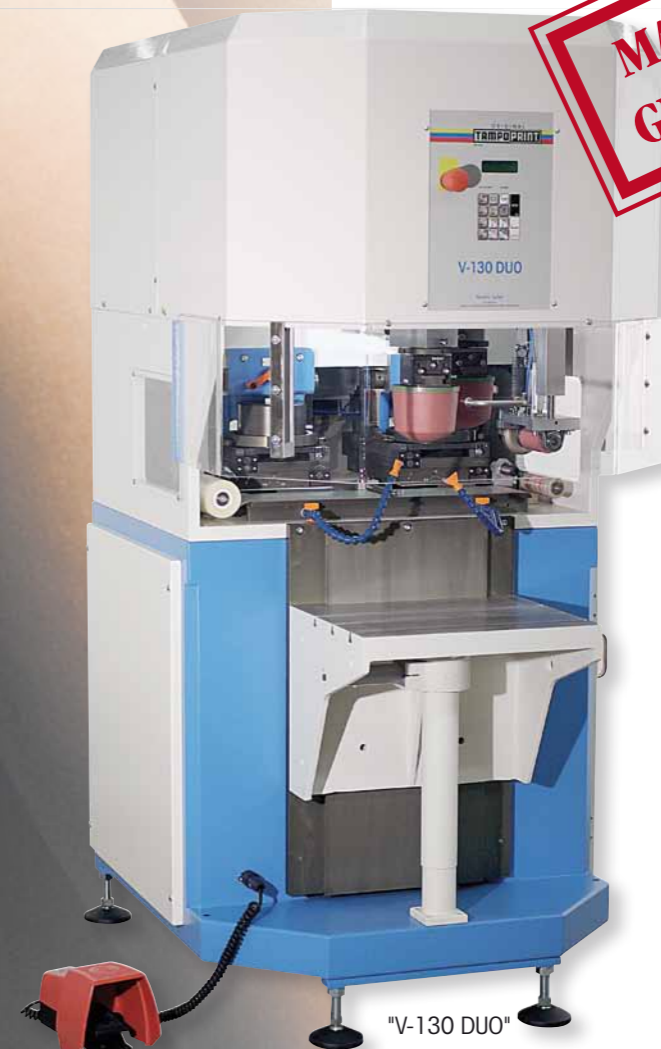
To increase performance (feeding), we recommend the addition of a rotary index table. With the implementation of our standardised "Modul 1000" the extension for a semi-automation will be achieved.

Automatisation

To allow integration into automated systems, the "V-DUO" series is also available as bench model (option: x-y cross table for machine adjustment).



MAGICAL TRIANGLE



"V-130 DUO"



"V-60/90 DUO"



"V-60/90 DUO" with rotary index table



A multi-colour thrust collar can also realise 4-colour printing, i.e. 2 ink/docting cups per cliché unit.

"V-130 DUO" Increased performance by mounting the machine to a "Modul 2000" unit

"V-60/90 DUO" Increased performance by mounting the machine to a "Modul 1000" unit

"T2" rotary index table for the feeding of workpieces

"V-DUO" principle

"V-DUO" with option: light curtain

"V-DUO" with ink residue pick-up system

